

ERRATA FOR INITIAL PRINT RUN

ANSWERS

page 535 Review set 7B

5 \$87168

CD CHAPTER 26 (ANSWERS)

page 14 Review set 26A

5 b $P = 44$

CD CHAPTER 27 (ANSWERS)

page 22 Review set 27B

3 e ii c 4.4 per 1000 people

ERRATA FOR SECOND REPRINT

TEXT

page 224 10C Life table

The last paragraph should begin:

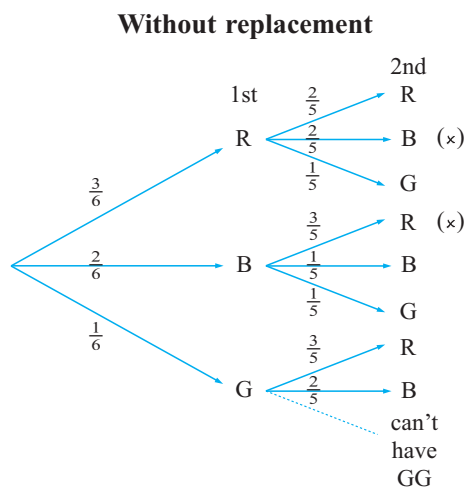
The highlighted line shows that out of 100 000 births, 99 231 females are expected to survive ...

page 305 Example 1 Solution

First paragraph should end: towards lower numbers of call outs.

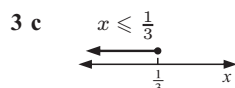
page 410 Selection with and without replacement

Diagram at top-right of page should be:



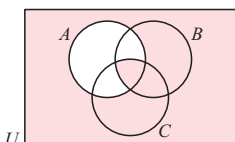
ANSWERS

page 524 Exercise 1E



page 530 Exercise 5E.3

9 h Diagram should be:



page 534 Exercise 7D.2

6 \$28.14

page 551 Exercise 18E

4 a (4 6)

ERRATA FOR THIRD REPRINT

TEXT

page 30 Opening Problem, first paragraph should read:

“Holly bought XBC shares for \$2.50 each and NGL shares for \$4.00 each.”

page 102 Highlighted text under “SUBSETS” should read:

Suppose P and Q are two sets. P is a subset of Q if every element of P is also an element of Q .

page 107 Exercise 5D

2 a $U = \{\text{integers}\}$ and $D = \{0\} \cup \mathbb{Z}^+$

page 108 Line under first diagram should read:

Suppose $U = \{1, 3, 4, 6, 9\}$, $A = \{1, 6, 9\}$ and $A' = \{3, 4\}$.

page 108 Text under “SUBSETS” should read:

If $B \subseteq A$ then every element of B is also in A .

The circle representing B is placed within the circle representing A .

page 133 Exercise 6G.1

Question 1 should begin: “State the gradient and y -intercept for these lines:”

page 176 Paragraph second from bottom should read:

“The theorem is: There exist no positive integers, x , y and z which satisfy the equation $x^n + y^n = z^n$ for integers $n \geq 3$.”

page 216 Exercise 9G

1 a Construct a cumulative frequency table for trout lengths, x cm, using the intervals $21 \leq x < 24$, $24 \leq x < 27$, ... and so on.

page 261 Exercise 11E.2

3 An electrical appliance store advertises a digital television for £1800. They offer a discount of 5% if the item is paid for in cash up front, or terms of 20% deposit plus fortnightly repayments of £64 for one year. How much more would you pay if you bought the television on terms rather than paying cash?

page 310 Exercise 14B

insert:

6 f Compare the measures of centre of each distribution.

page 331 Example 6

part c, insert missing label under diagram: “scale factor $\frac{1}{2}$ ”

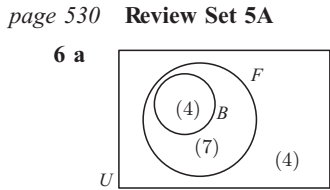
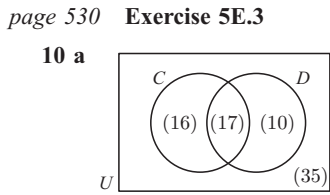
page 384 Opening Problem

First paragraph should read: “Tomas has a garden hose with a nozzle that allows water to shoot out in a continuous fine line.”

ANSWERS

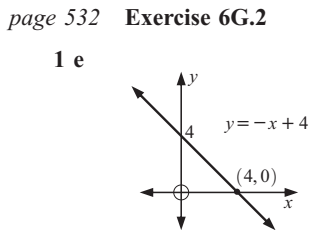
page 524 **Exercise 1E**
 4 a no solutions as $1 \not\geq 6$

page 524 **Exercise 1G**
 7 3 850 XBC, 950 NGL shares



page 532 **Exercise 6E**
 insert after the last diagram of **Exercise 6E**:

6 a $a = 4$
 b $\frac{1}{2}, -2$



page 537 **Exercise 9C**
 7 mean ≈ 34.6 chocolates, median = 35 chocolates

page 538 **Exercise 9G**
 3 a median ≈ 45.5 min

page 538 **Review Set 9B**
 3 d Table, row 5

60 - < 65	17	62.5	1062.5
-----------	----	------	--------

5 e i ≈ 39.0 sec ii ≈ 35.4 sec iii ≈ 43.3 sec
 5 f ≈ 7.9 seconds

page 539 **Exercise 10E**
 7 a $\frac{1}{12}$ or $\frac{31}{365}$ (more accurate) or $\frac{124}{1461}$ (more accurate again)

page 541 **Exercise 11E.4**
 3 a €3792.80 b €9800
 4 a \$14382 b \$9198
 Trina should borrow from the Cash Credit Union.

page 541 **Review Set 11B**
 6 a \$15.65

page 541 **Exercise 12C.3**
 2 b $x \approx 7.0, \alpha \approx 60.2^\circ, \beta \approx 29.8^\circ$
 3 Change question number to 4

page 541 **Exercise 12D**
 6 b 5.85°

page 542 **Exercise 12E**
 4 119°
 10 Diagram forms part a, then change numbering to: b 24.4 km
 c 138° d 318°

page 542 **Exercise 12F**
 4 a $20\sqrt{2}$ m (28.3 m)

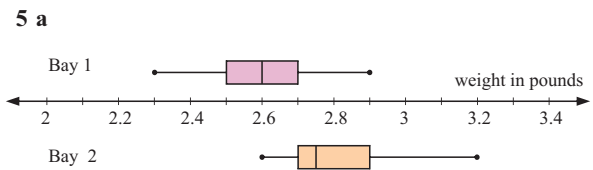
page 542 **Exercise 13A**
 5 a i €6.40 ii €9.40 iii €13.80 b €12.20

page 543 **Exercise 13C.1 add:**
 6 b £6341.14

page 543 **Exercise 13D Q.7 - change numbering of parts:**
 7 c So, we predict $S_n = n 2^{n+1}$ d $S_{20} = 20 \times 2^{21} = 41\,943\,040$

page 543 **Review Set 13A**
 7 a 5, 8, 11, 14 matchsticks

page 544 **Exercise 14B**
 3 a iii Ind range = 45 cm, Aust range = 52 cm

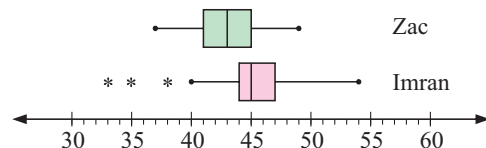


The distribution from *Bay 1* is symmetrical with no outliers.
 The distribution from *Bay 2* is positively skewed with no outliers.

page 545 **Exercise 14B**
 (last paragraph forms part g)

8 g We conclude that:
 . machine A does cause fewer faulty caps than machine B
 . machine A works with better consistency than machine B, but probably has an intermittent fault that needs attention.

page 545 **Review Set 14A**
 3 a

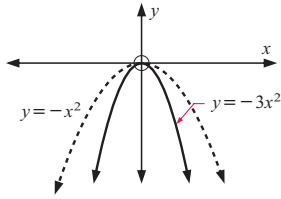


page 550 **Exercise 17C.3**
 1 e Approx $(-4.02, 0.124), (0.225, -7.50), (1.36, -3.44), (2.44, 2.82)$
 2 b (delete - no solutions)

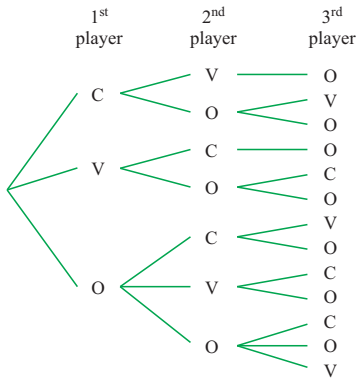
page 552 **Exercise 18F**
 2 c €31 057

7 c \$37599

1 e



2 a



4 c i 0.000 000 81

3 Fraction right of diagram, change to: $\frac{11}{20}$